

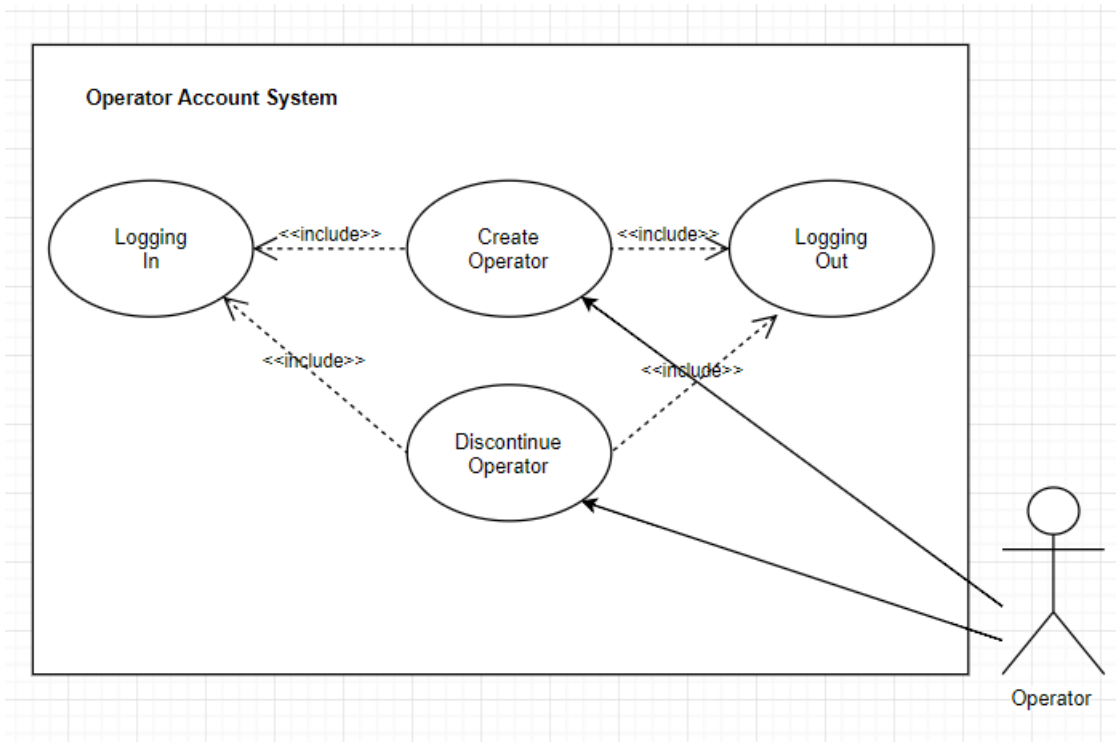
Create Operator Description

The use case description depicts all the relevant information for the use case, in order to give an overview of the flow and systems involved in the use case.

Actors:
Sweet Karoline's Cakes Operator
Includes:
Logging In Logging Out
Precondition:
Must have a new operator.
Extension Points:
Flow of Events <ol style="list-style-type: none">1. The actor navigates to the "Create Account".2. The actor enters the first name of the new user.3. The actor enters the last name of the new user.4. The actor enters the email/username of the new user.5. The actor enters, or asks the user, to enter a password for the new user.6. The actor, or new user, repeats the password.7. The system verifies the password meets the minimum criteria.8. The actor clicks "Create Account".9. The system checks if the username is already in the database.<ol style="list-style-type: none">a. Doesn't Exist: The system creates an operator in the database.b. Exists: The system errors out.10. The system creates the operator in the database.11. The system returns the acceptance of the account to the front end.
Postcondition:
New login is created for the new operator to use.

Create Operator Use Case Diagram

The use case diagram depicts how the use case relates to the system and the actor. The Create Operator use case is within the Operator System and is only handled by the current operator. The Create Operator is also related to the discontinue operator based on the operator system.



Create Operator Prototype

The use case prototype depicts the general look of the webpage the operator will interact with during the user case. In this use case, there will be a simple account creation page that will show your basic input boxes for First Name, Last Name, Username, and Password (Figure 1). The operator must enter the password twice and if it fails it will error and not let the user continue (Figure 2).

The image shows a web browser window titled "Sweet Karoline Cakes" with a "Create New Account" form. The form is centered on a light gray background. It contains the following elements:

- Title:** "Create New Account" centered at the top of the form area.
- Input Fields:**
 - First Name:** A text input field with the label "First Name" above it.
 - Last Name:** A text input field with the label "Last Name" above it.
 - Username:** A text input field with the label "Username" above it.
 - Password:** A text input field with the label "Password" above it.
 - Re-Enter Password:** A text input field with the label "Re-Enter Password" above it.
- Buttons:**
 - Create Account:** A button located below the Password field.
 - Cancel:** A button located below the Re-Enter Password field.
- Browser UI:** The browser window has a dark gray title bar with three window control buttons (minimize, maximize, close) on the left. A red "Save" button is visible in the top right corner of the browser window.

Figure 1

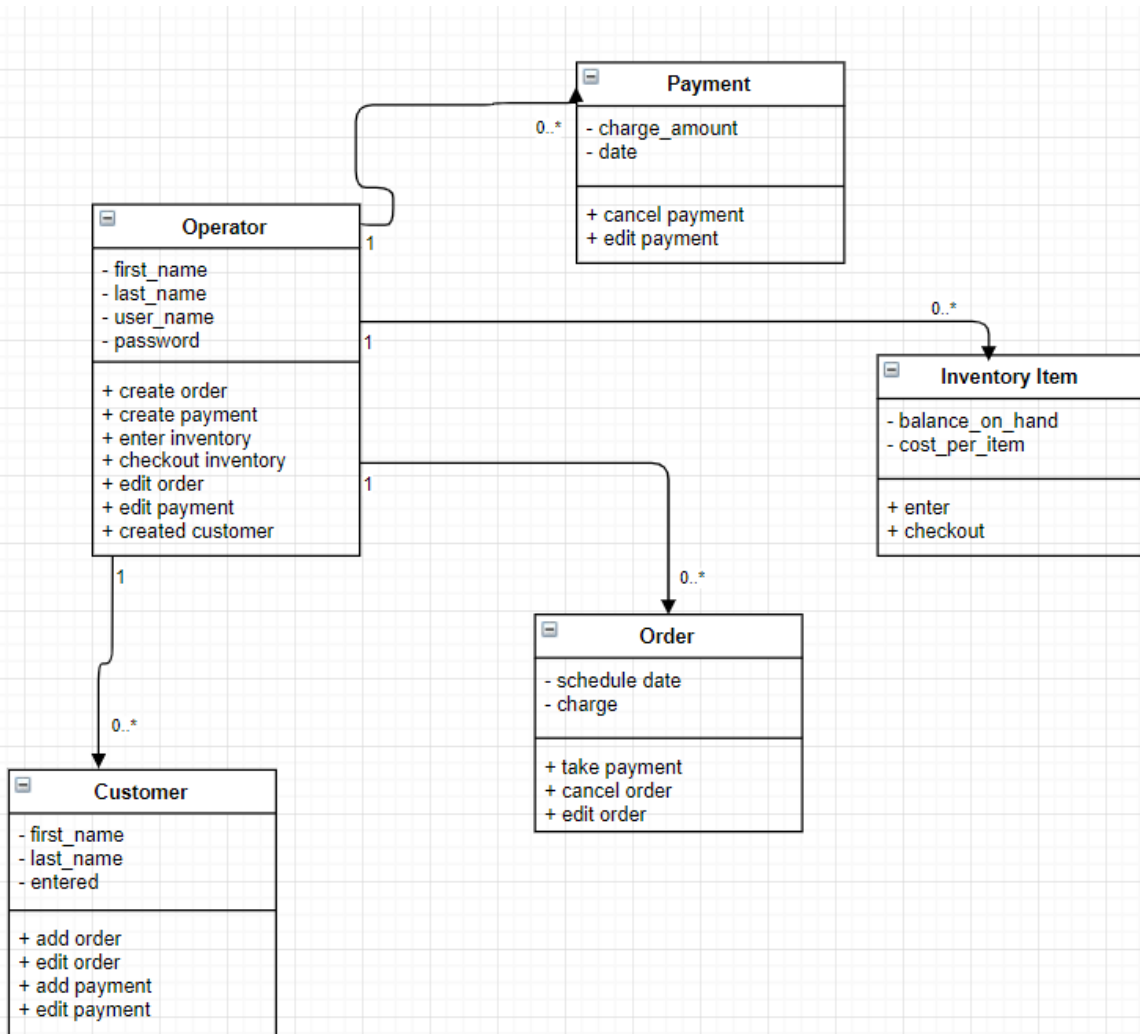
The screenshot shows a web browser window titled "Sweet Karoline Cakes" with a "Create New Account" form. The form contains the following fields and elements:

- First Name:** A text input field.
- Last Name:** A text input field.
- Username:** A text input field.
- Password:** A password input field showing four asterisks (****).
- Re-Enter Password:** A password input field showing five asterisks (*****).
- Error Message:** A red text message below the password fields stating: "PASSWORDS DO NO MATCH. Please match passwords before continuing."
- Create Account:** A button at the bottom left.
- Cancel:** A button at the bottom right.

Figure 2

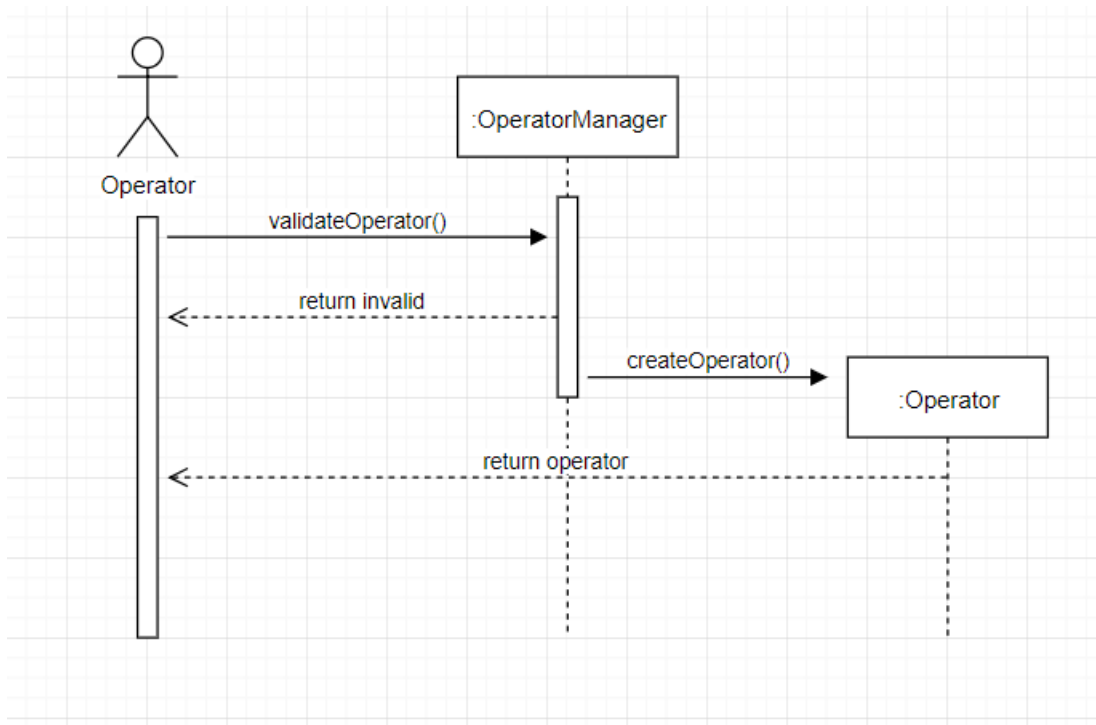
Create Operator Class Diagram

The use case class diagram depicts all the relationships between the created operator and the rest of the database models. In this case, the operator has one to many relationships with Payments, Orders, Inventory Items, and Customers. This means that an operator can create, or edit, many of these database models.



Create Operator Sequence Diagram

The sequence diagram depicts the events of objects – or in other terms the lifeline of the objects. In this use case, the sequence of events is rather simple. The current operator asks to validate a new operator, and once it's validated the current operator asks to create a new operator.



Flow of Events

1. The actor navigates to the "Create Account".
2. The actor enters the first name of the new user.
3. The actor enters the last name of the new user.
4. The actor enters the email/username of the new user.
5. The actor enters, or asks the user, to enter a password for the new user.
6. The actor, or new user, repeats the password.
7. The system verifies the password meets the minimum criteria.
8. The actor clicks "Create Account".
9. The system checks if the username is already in the database.
 - a. Doesn't Exist: The system creates an operator in the database.
 - b. Exists: The system errors out.

10. The system creates the operator in the database.
11. The system returns the acceptance of the account to the front end